

ECP Networks Summary: A Snapshot



ECP Featured Networks

The networks encapsulate the spirit of the ECPs—demonstrating how the ECPs support building **sustainable interdisciplinary collaboration (internal and external)** for impactful research.

The networks' impact expands beyond more than just traditional outputs (grants, articles) to ongoing collaboration with aligned partners. It is about creative and innovative research translation. Many of the networks are run by early career researchers (ECRs) and foster collaboration not only across disciplines but career trajectories. We have networks at different scale and depth in response to existing and future orientated real-world problems.

This page highlights 6 key ECP networks from across the enormous breadth of activities:

AUSTRALIAN MARITIME LOGISTICS RESEARCH NETWORK (AMLRN)

Maritime logistics is critical to Australia's economy. The AMLR Network connects academics within the field of maritime logistics to industry professionals and organisations that have interest in maritime logistics research. The network helps to create opportunities for maritime logistics research through improved networks, shared resources and a synchronised effort to optimise outcomes in Australia. AMLRN has now become an important platform for maritime logistics engagement in Australia, collaborating via joint research projects and events such as research webinars, seminars, workshops and an annual symposium.

Amongst other outcomes, the Network has helped to support the development of a \$36,222 grant from DFAT/Australia-ASEAN Council to investigate "Post-COVID-19 Vietnam-Australia Web-based Supply Chain Collaboration Platform" and an allocation of \$89,833 from a \$234,325 grant with the Australian Maritime College (University of Tasmania) and Curtin to investigate 'Maritime Supply Chain Security in the Indo-Pacific Region: Threats and Policy Implications for Australian Defence', from the Strategic Policy Grants 2021, Department of Defence.

[AMLRN Website](#)

THEORETICAL & COMPUTATIONAL MODELLING NETWORK (TCM)

The TCM Network is a forum to bring together all computational, theoretical and modelling researchers at RMIT. Computation provides a point of connection between researchers working in otherwise disparate and separate fields. TCM's first years have focused primarily on internal network development, HDRs, and building an online community. The Network brings RMIT researchers together as a community by holding regular events that combine seminars and networking opportunities. Supporting HDRs and new RMIT research staff is a key focus of the network. Current plans for further development include increased external engagement and communication; developing shared high-impact scientific goals, with a view to future Linkage grants, Centres of Excellence & Cooperative Research Centres; and sharing expertise amongst members for realising high-impact result with low-cost resources, to help us all.

[TCM Website](#)



HASH NETWORK

The Humanities, Arts, Social sciences and Health (HASH) Network is an interdisciplinary network which brings together health, arts, social sciences, humanities, design, and science and technology. In order to set a transformative and creative agenda for health research in the 21st century, HASH aims to ignite creative connections and collaborations among its members and explore and respond to real-world health issues. The network's members include academics, professionals, students and community members across diverse disciplines and interests.

HASH's approach focuses on open dialogue aimed at developing innovative approaches to contemporary health concerns and advancing inquiry in interdisciplinary health research and practice. The network provides a space for people to share ideas, present their work and discuss pressing topics of research methods and theory, impact and engagement, and professional and creative practice.

www.hashnetwork.org

SASCCAR NETWORK

Spatial is everywhere. Space and place underpin our understanding of problems in a huge variety of applications, from smart cities to emergency response, education and environment. This understanding increasingly informs our decisions across government, industry, and the wider society today. RMIT is home to a remarkable breadth and depth of world-leading spatial research and researchers.

SASCCAR (Space and Spatial Capability Cluster @RMIT) aims to foster a sustainable community of practice and to develop an interdisciplinary research cluster in "spatial" through increasing of internal and external collaborations.

sccar.rmit.edu.au

W+SN NETWORK

Wearables and Sensing Network (W+SN) coalesces cross-disciplinary clusters to develop work that is technologically and aesthetically world-leading. We combine expertise in nanoscale computer architecture, conductive materials, mechanical engineering, IoT systems and wearable sensors with cutting edge design thinking, co-design, product design and business knowledge. We are reframing how wearable and sensing technologies have been traditionally developed – privileging a technology push approach – by applying Human Centred Design principals to high impact social, health and environmental issues. Our members traverse **twelve** University Schools and are passionate about working collaboratively across disciplines and have a track record of interdisciplinary engagement.

www.ws-network.com.au

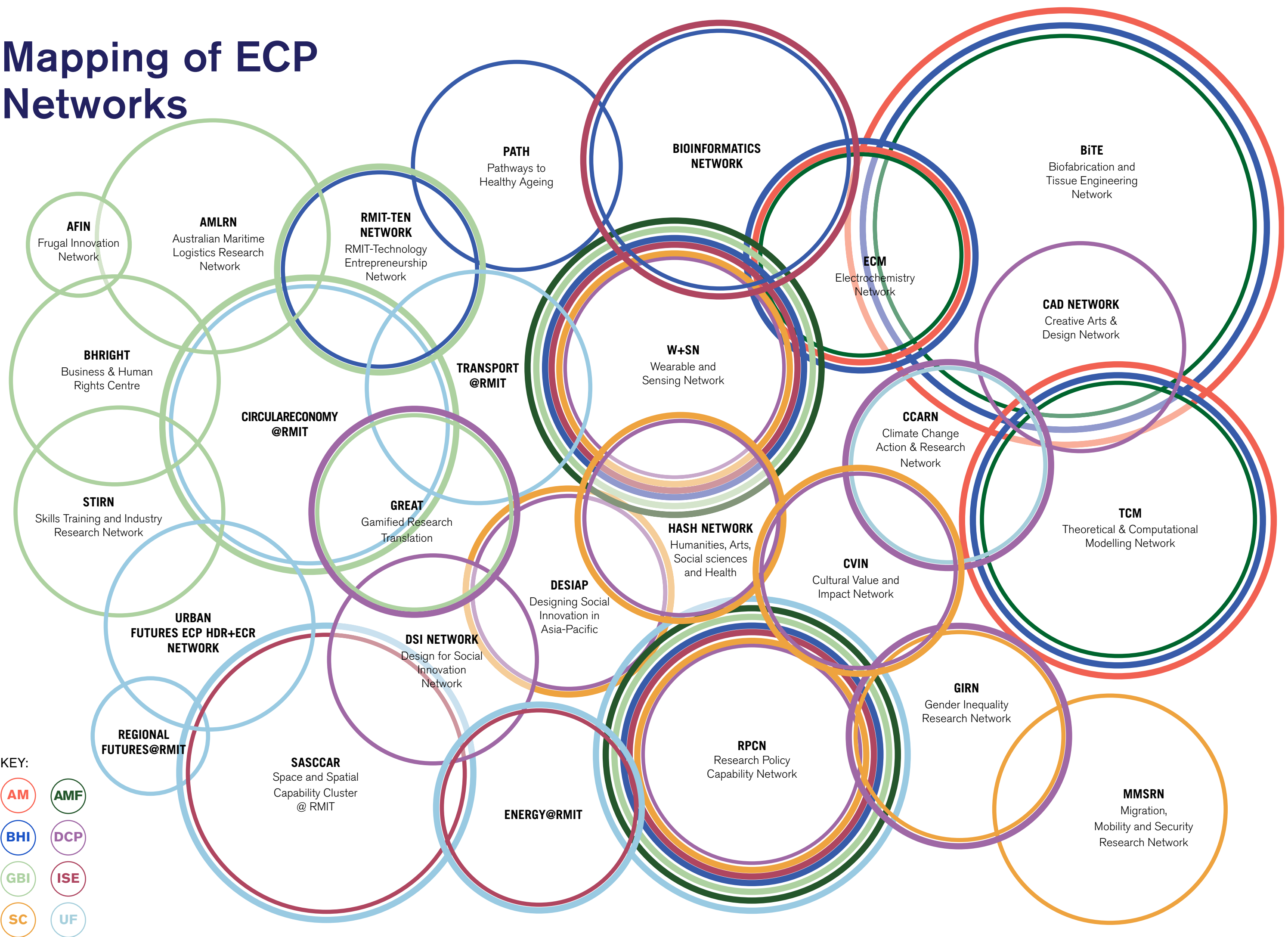
BIOINFORMATICS NETWORK

Established in 2019 with the support of the BHI and ISE ECPs via the ECP SCDF, the Bioinformatics Network supports researchers at RMIT University to design, conduct and produce results in the area of Bioinformatics. The network held 2 symposia in the same year it was established for academics and HDRs to further their skills in Bioinformatics.

Since then, the Network has managed to receive nominal amounts of external funding to hold regular workshops and regularly meets with its growing membership of 78 members to date, to discuss tools and methods to support research.

[Bioinformatics Network Website](#)

Mapping of ECP Networks



Diverse ECP Networks

In addition to the six networks featured previously, the ECPs support a amazing diversity of different networks.

Our “pebbles in the pond” diagram on the previous page maps out many of these different networks from the perspective of the ECPs each network connects to. It is natural that most networks themselves cross boundaries, connecting to and receiving support from multiple ECPs.

The following pages give some more details on this diversity of networks, their aims and outcomes, and the activities they pursue.

AUSTRALASIAN FRUGAL INNOVATION NETWORK (AFIN)

The overarching aim of this Network has been to rapidly develop capability in Frugal Innovation (FI) and expand collaboration activities with more international researchers and research entities. To achieve this, an online website serves the purpose of promoting and showcasing AFIN's activities and outputs and raising awareness among Australian firms of the potential benefits of FI. Through increased activity, the Network hopes to fast-track capability development in FI, enabling the Network to consult more effectively with Australasian industry.

Recently, the Network initiated a co-tutelle scholarship with the Hamburg University of Technology and are currently in the final stages of enrolling the first co-supervised PhD student based at RMIT who will engage local industry through applied research. Hence, the relationship with TUHH's Centre for Frugal Innovation and similar entities in Europe is extending AFIN's knowledge and skills base. In the next two years AFIN plans to recruit more research scholars and PhD students to join the team to work on several research projects that have been earmarked.

[AFIN Website](#)

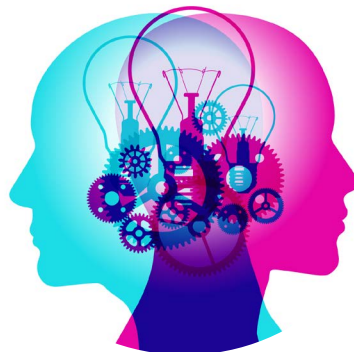
BEHAVIOURAL INNOVATION RESEARCH AND DESIGN SOCIETY (BIRDS)

The Behavioural Innovation Research and Design Society (BIRDS) was established to create cross-disciplinary competencies and capabilities at the intersection of human psychology, humanistic design, and innovation. BIRDS serves as a catalyst for capability development and a forum for inter-disciplinary researchers from psychology, innovation management, and design to develop coherent and collective thought leadership on the human side of innovation. BIRDS aims to catalyse meaningful cross-disciplinary knowledge exchange, foster good practices in behavioural innovation research, and create societal impact through participation in collaborative research-oriented projects. The BIRDS mission is to increase awareness and knowledge on the human side of innovation encourage inter-disciplinary research integration to solve human challenges in innovation, and attract external funding

[BIRDS Website](#)



FRUGAL INNOVATION A GLOBAL RESEARCH COMPANION



CIRCULAR ECONOMY HUB (CE HUB) / CIRCULAR ECONOMY@RMIT

The RMIT Circular Economy Hub's cross-disciplinary nature supports empirical approaches to holistic and systemic engagement across research partnerships, expanding the university's impact and expertise on circular economy. It also supports the emergence of a new capability building platform across micro-credentials, executive training, vocational and higher educational outcomes.

The five key thematic areas where the Network has strong capabilities demonstrating real-world outcomes through projects include circular economy science and engineering, policy and governance, construction, design, and waste recovery.

[Circular Economy @ RMIT Website](#)

CROWDSOURCING RESEARCH NETWORK (CRN@RMIT)

CRN@RMIT is the premier Network for crowdsourcing-related research and innovation at RMIT. Our mission is to bring together creative, passionate, and motivated individuals to explore ways by which cutting-edge research, innovation, and policy across scales and domains can help solve the most pressing challenges in urban future. CRN@RMIT aims to facilitate information sharing and expand communications about research interests and opportunities in this area; develop linkages and collaborative partnerships between academic researchers and community organisations; and provide capacity building and ongoing support for conducting collaborative research.

Drawing on fields from disaster resilience to public health, from business to governance and law, and from citizen science to design and creative practices, CRN@RMIT is not focused on answers, rather it aims to develop new ways of problem-solving methods based on crowdsourcing and collective intelligence. We have a very diverse group of people in our Network, coming from nine different schools at RMIT University, industry and the public sector.

[CRN @ RMIT Website](#)

CULTURAL VALUE AND IMPACT NETWORK (CVIN)

With the aim to build strong partnerships between industry and academia, The Cultural Value and Impact Network (CVIN) was developed at RMIT University in 2019, led by Dr Marnie Badham and Professor Kit Wise (School of Art), Dr Brownyn Coate (School of Economics, Finance and Marketing), and Dr Gretchen Coombs (Design and Creative Practice Enabling Creativity Platform). The Network has connected academics from different disciplines with extensive research expertise and experience in cultural value to build interdisciplinary methods and teams. CVIN is creating multidisciplinary teams tailored to work in research partnerships with industry.

We draw on a suite of diverse methods including: case studies, quantitative surveys, ethnography, integrated forms of artmaking, discourse analysis, policy analysis, participatory action research, participatory advocacy methods, contingent valuation, economic modelling, storytelling and historical method field research. In the long term, CVIN will establish leadership in the area of cultural valuation and impact in Australia as well internationally.

[CVIN Website](#)

DESIGNING SOCIAL INNOVATION IN ASIA-PACIFIC (DESIAP)

With the aim to build strong partnerships between industry and academia, The Cultural Value and Impact Network (CVIN) was developed at RMIT University in 2019, led by Dr Marnie Badham and Professor Kit Wise (School of Art), Dr Brownyn Coate (School of Economics, Finance and Marketing), and Dr Gretchen Coombs (Design and Creative Practice Enabling Creativity Platform). The Network has connected academics from different disciplines with extensive research expertise and experience in cultural value to build interdisciplinary methods and teams.

CVIN is creating multidisciplinary teams tailored to work in research partnerships with industry. We draw on a suite of diverse methods including: case studies, quantitative surveys, ethnography, integrated forms of artmaking, discourse analysis, policy analysis, participatory action research, participatory advocacy methods, contingent valuation, economic modelling, storytelling and historical method field research. In the long term, CVIN will establish leadership in the area of cultural valuation and impact in Australia as well internationally.

desiap.org

ELECTROCHEMISTRY NETWORK

The Electrochemistry Network (ECN) started during the 2020 COVID-19 lockdown to establish a Network of RMIT researchers with expertise in electrochemistry and allied sciences and engineering. We also provide a platform to identify high-impact scientific goals that could be addressed by our collective strengths, with a view to future Linkage grants, Centres of Excellence & Cooperative Research Centres; and high-impact, low-cost resources we can obtain for our members to help us all achieve maximum results.

[Electrochemistry Network Website](#)

ENERGY@RMIT

Energy@RMIT has brought together for the first time broad researcher capabilities connected with energy at RMIT. The Network forms a team with expertise that spans the complete research space required to understand, lead, and support the energy transition. This covers, for example, blue sky research into new materials for solar energy conversion and storage, modelling the electricity distribution network to understand how to stabilise it with high penetration of intermittent renewables, new biofuels, and the legal issues associated with implementing new energy policies.

Currently we are focussing on five key research areas: built environments, conversion and storage, economics and policy, electrical energy systems, power and energy informatics. Our objective is to tease out RMIT's expertise and capabilities broadly in energy. The information is being synthesised and presented externally via a website to give a central and organised face of our capabilities.

[Energy @ RMIT Website](#)



GAMIFIED RESEARCH TRANSLATION (GREAT)

GREAT serves as a catalyst and anchor for capability development and a forum for faculty, specialists, and practitioners to develop coherent and collective thought leadership on how might we develop and implement game-based tools and gamification as the means of research translation to achieve societal impact. In its most basic form, business research translation with gamification involves multi-disciplinary tasks of taking research findings, human psychology and technology of game-design, and applying them to business contexts - to achieve impact through change in behavior, cognition or emotional states.

Current business research translation activities tend to rely on traditional academic outputs which may not deliver the intended societal impact - a challenge highlighted at local and international level. The GREAT mission is to increase awareness and knowledge on gamification of business research, encourage researcher-industry integration to solve business challenges through games, and foster and deploy a cross-disciplinary network of GREAT experts, specialists and enthusiasts.

[GREAT Website](#)

MIND THE GAP – INCLUSION IN HEALTH NETWORK

The Mind the Gap Inclusion Health Network aims to address the inclusion, art and ethical dimensions of thought leadership on issues associated with subgroups “being left behind” as mental health support systems (medical and carers/social and digital) evolve in different societies. The Network focuses in particular on two key aspects: steady state mental health supports; and crisis response and recovery supports, such as COVID19, fires etc.

POLICY@RMIT

Policy@RMIT is helping deliver on the research engagement component of the DELWP-RMIT Memorandum of Understanding (MoU). Policy@RMIT aims to study and enable collaborations between researchers and policy practitioners in co-producing research that supports evidence-informed policy in addressing major policy and societal issues.

Policy@RMIT actively seeks to co-identify and co-define research problems, and subsequent research questions, approaches, and outputs that stem from a shared and/or pluralistic view of a problem, place, and land. In doing so, Policy@RMIT engagement seeks to operate following the principles of mutual respect and trust, recognition and sovereignty, co-production and co-formulation of knowledge, and active engagement with multiple ways of knowing a place.

[Policy @ RMIT Website](#)

PRINT-CELL INITIATIVE TEAM

The rate of incidence of metabolic disorders including Type 1 diabetes (T1D: affects ≈122,000 Australians) and cancer (>450,000 estimated deaths), is increasing. Cell-based therapy involves modifying a patient's own cells or cells from a donor to fight disease and alleviate medical conditions.

This Network aims to bring cross-disciplinary and innovative minds together to develop engineering and bio-fabrication pipelines for production of metabolically active cell based therapies.

[Print-Cell Initiative Website](#)

REGIONAL FUTURES@RMIT

Rural and regional futures have long been a policy concern. The RegionalFutures Network at RMIT brings together interdisciplinary research expertise in rural and regional policy. A focus on regions is important for many reasons. Many policy and many practical initiatives operate at the regional scale. Focusing on regions also involves looking beyond (and at) the normal urban-centrism that tends to dominate policy, especially in Australia. Finally, regions encompass a wide array of functions on which cities rely.

One of our particular interests in this Network is regions that are transitioning (or likely to transition) out of polluting forms of energy production, namely coal, into something else. Many issues, risks and agendas tied up in such a “transition”. Our Network aims to generate useful insights into what that “something else” could be. Exemplar projects include making and remaking regions and adaptive regional transitions in the Latrobe Valley.

[Regional Futures Website](#)

SKILLS TRAINING AND INDUSTRY RESEARCH NETWORK (STIRN)

With the current rate and scale of change in workplace technologies, following advancements in artificial intelligence, advanced digitalisation and smart robotics, large scale industrial and occupational transformation is underway. The Skills Training and Industry Research Network (STIRN) aims to examines these developments and the potential implications for work and employment. The goal is to inform the development of effective policies and strategies for socio-economic resilience.

[STIRN Website](#)

SUSTAINABLE DEVELOPMENT GOALS NETWORK (SDG@RMIT)

The Sustainable Development Goals Research Network (SDG@RMIT) aims to bring together RMIT academics to share their ideas about engaging with SDGs in their research, to discuss experiences and challenges, and to foster collaboration. The Network complements the work on the SDGs at the university strategic and policy level with a focus on fostering a critical community of ground-up learning and academic practice among staff.

The Network will organise events to facilitate discussion and learning and to support SDG-related activities in research, engagement, and L&T. The planned SDG Innovation Platform would harness RMIT's latent potential to support the innovative cross-scale, cross-sectoral linkages and experimentation needed to successfully pursue genuine sustainable development. With a strong virtual as well as a physical presence in Melbourne, Barcelona and Vietnam, the platform would lead critical thinking and action on the SDGs, co-developing advice and advocacy with strategic stakeholder partnerships.

[SDG @ RMIT Website](#)



THE MIGRATION, MOBILITY AND SECURITY RESEARCH NETWORK (MMSRN)

The MMSRN is focused on the ECP priority area of Transformations in Migration, Mobility and Security. The aim of the Network is to link RMIT researchers working on the social, economic and cultural implications of increasing global mobility and related issues of security and (in)formal migration. The activities of MMSRN are aimed at enhancing and consolidating research strengths in these interrelated areas and creating synergy across different RMIT research units and HDR supervision. The ultimate vision of the MMSRN is the recognition of RMIT as a national leader in the fields of migration, mobility and security.

TRANSPORT@RMIT

Transport@RMIT brings together transport researchers and educators across RMIT to enhance, promote and deploy the university's interdisciplinary capability in transport. The Network's multidisciplinary expertise focuses on productive, sustainable and inclusive transport systems for growing and complex large cities. Our Network's research is policy- and industry-relevant, based on conceptually rigorous approaches and data driven analysis.

Collaboration with policy-makers, industry and practitioners helps to maximise the relevance of our research, but also importantly, disseminate our findings. Research generated by Transport@RMIT contributes to the strategic understanding of the pressing challenges in our growing cities; informing evidence based policy and industry decision-making; directing us to data and technology to identify issues and understand behaviour; and helping us to exploit opportunities of emerging technology and manage innovation risk.

[Transport @ RMIT Website](#)

URBAN GREENING@RMIT

UrbanGreening@RMIT is a cross-school, cross-disciplinary Network of more than 80 academic staff across 20 disciplines in 15 schools, committed to tackling the challenges of urban greening. We bring powerful research capabilities to address issues such as urban development, environmental sustainability, community inclusion, and climate change for urban areas. We foster collaboration and holistic approaches with partners from community, industry and government.

We believe practical and innovative solutions come from combining skills and expertise across a range of disciplines, such as art, architecture, design, ecology, education, engineering, community engagement, health, spatial analytics, and sustainable planning, policy and governance. Our research capabilities are aligned with national and international urban greening priorities and reflect the combined strength of our multi-disciplinary research specialities.

[Urban Greening @ RMIT Website](#)

Acknowledgements

Compiled with acknowledgements to all the Network Leaders and ECP Team, and special thanks to Adelina Onicas, Emma Dohrmann, Esther Pierini, Larissa Hjorth, Matt Duckham, Michelle Nicolo, Sarah Rigbye.